

PORTAGE PARK

NEIGHBORHOOD ASSOCIATION

Community
News & Views

March 2011

Meetings and Announcements

Next PPNA Public Meeting

March 14th, 2011
4839 W Irving Park Rd
7:30 PM

Guest Speaker

At this time both
candidates for the 45th
Ward Alderman will be
at our meeting

C. A. P. S.

Beat 1624 and 1623

March 17, 2011
16th Dist. Police Station
5151 N Milwaukee
7:00 PM

Beat 1633 and 1634

March 15, 2011
Merrimac Park
6333 W Irving Park
7:00 PM

16th District CAPS Office Information

312-742-4521



We have a Runoff!

April 5th



38th Ward Aldermanic Runoff Debate

Tom Caravette and Tim Cullerton

Thursday March 24th

7:00 PM to 9:00 PM

Luther North

5700 W Berteau Avenue

Moderated By Ben Joravsky

political reporter for The Chicago Reader

Debate sponsored by: Portage Park Neighborhood Association, Friends of Portage Park, Old Irving Park Association, Northwest Side Housing Center and Northwest Neighborhood Federation

45th Ward Aldermanic Runoff Debate

John Arena and John Garrido

Thursday, March 31st

6:30 PM to 9:00 PM

Copernicus Center

5216 W Lawrence

Moderated by Abdon Pallasch

political reporter of the Chicago Sun Times.

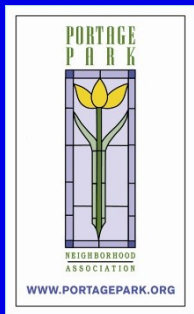
Face Book Page;

<http://www.facebook.com/event.php?eid=201659353179732>

Debate sponsored by; Jefferson Park Neighborhood Association, Portage Park Neighborhood Association, Old Irving Park Association, Mayfair Civic Association and The Copernicus Foundation.

In this Issue

- Get out and vote April 5th
- New Palates Review
- Seanachai Theatre
- P.P. Garden Club Update
- Parks Update
- Help your community
- Have You Noticed



Portage Park
Real Estate Facts

*Source MRED LLC.
Philip Schwartz, Broker
Baird & Warner

Presidents Comments

Just remember to get out and vote on April 5th. For the February 22nd election we had a citywide turnout of just over 42%. This 42% consists only of registered voters. According to the Chicago Board of Elections, we have just over 1.4 million people registered to vote in Chicago, out of a population of approximately 3 million (yes, yes, people under 18 and people who cannot vote...) this is who can vote. Then, after that, only about 500,000 voted. A total of 12,241 people voted in the 38th ward and 15,887 in the 45th.

The reason I am telling you all of this? Because we need to do it all over again. As a matter of fact your vote is most likely more important now than it was on February 22nd. Why? Because now we have only two candidates in each of the 38th and 45th Ward. I know many of you did not vote for either of the candidates, but this is no reason to stay home. This is a reason to reacquaint yourself with who is left and make a new decision or vote for the candidate you voted for the first time. They all still need your help. This is still very important.

The community organizations are getting together again to sponsor debates in both wards. It would be to your benefit to take the time and get out. I am only talking about a few hours total, probably for both the debate and voting.

One of the reasons I looked up the amount of people that voted in each ward was to see how we compare after April 5th. Will we get the same? More? Less? I say time and time again getting out to vote is important, First, I do not care who you vote for, I care if you vote. Second, only if you have voted, can we sit down and then discuss if we have a difference of opinion. Without voting first, we have nothing to talk about.

A total of 12,241 people voted in the 38th ward and 15,887 in the 45th.

PPNA Looking for Volunteers

The community has two big events this year. Not only will the PPNA be holding its 12th Annual Independence Day Bike Parade but, we are helping the Six Corners Association with it's First Annual BBQ Fest.

Both events are asking the community to show neighborhood spirit and help.

As always the parade requires planning and help months before

the annual event. Fundraising will start shortly, with planning and permits to quickly follow.

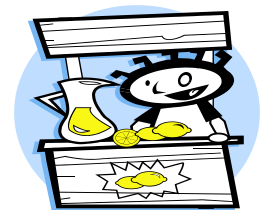
The BBQ Fest will be spearheaded by the Six Corners Association. Training will be provided. Volunteer applications will be available online shortly for this event.

Both events will be held in July, The BBQ Fest is on the weekend of June 18th and 19th. The Parade will be on June 26th.

If you would like to volunteer for either, or both of these events please email the PPNA at

gerardms1@netscape.net

or call 773-736-3076



| Portage Park | Homes | 2-4 Flats | Condominiums |
|--------------------|--------------|------------|--------------|
| Sold in 2010 | 278 | 101 | 53 |
| AVG Days on Market | 147 | 135 | 192 |
| AVG Sale \$ | \$215,695.00 | 209,677.00 | 122,341.00 |
| % Change from 2009 | -2.58% | -10.51% | -24.20% |

A fun time at the first movie



Over 250 people attended opening night for the new Northwest Chicago Film Society screening of "Written on the

Wind." The Northwest Chicago Film Society has taken over the former Bank of America Cinema. Movies will show every Wednesday night at 7:30. All the films are family friendly with a variety of comedies and

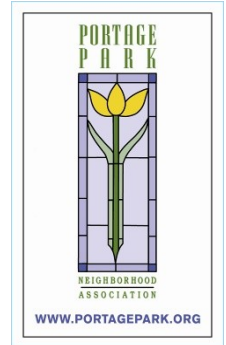
melodramas: On March 9th, you can see *A Bill Of Divorcement* then on March 16th, *I shot Jesse James*. For more movies and information go to :

www.northwestchicagofilmsociety.org/



Do you know these actors? Go to the NCFS web site and see who they are.

Great Movies for \$5.00 every Wednesday at the Portage



Parks Update

Dickinson Playlot - The annual Earth Day cleanup has been set for April 16th in Dickinson Park. The cleanup will start at 9:00 AM and end around noon. You are asked to dress appropriate for cleaning and you should probably bring work gloves.



Portage Park - This past Thursday (February 24), Friends of Portage Park met with the park district project manager to discuss the final plans for the new playground. We are very happy to report that after 3 1/2 years of working to make this project a reality, Portage Park will be breaking ground on a beautiful and unique playground at the end of June. We thank all of you who have supported us and this effort. The new playground design will be available shortly to view on

our website and in the park house.

Bricks available -Last call! Final reminder that Engraved Bricks will only be available until March 31. Please visit our site for information on brick sizes and prices.

www.friendsofportagepark.org

Farmers Market - We will be moving to a new location in the park this year. Look for us on the Northwest corner of the park at Central and Berteau, near the field house. This will be a great move for us and it will allow us to be more visible to passing traffic. Here are our market dates for

2011: June 5, 19 July 17, 31 Aug 7, 21 Sept 18 & Oct 2.

Community Service - Community service hours available to high school students who are available to volunteer with assisting vendors unload, market sign placement, and market clean up.

Meetings - FOPP meetings are held 4th Monday of every month at 7:30 pm in the Portage Park Senior Center - 4100 N. Long. Questions/ Comments please send an email to

info@friendsofportagepark.org

Renew your PPNA Membership

To renew your membership, go to;

www.portagepark.squarespace.com/membership/

Now is the time to renew your PPNA membership.

2011 is upon us and we have lots of good things going on this year. Many of you have been getting the email updates. We are trying to get important information out to you as soon as we can. Many of

you have expressed that you like this new service.

Another thing to look forward to; We will be sending out letters to all of our past newsletter advertisers to join us in advertising on our new web site. At this time we will also be asking new

businesses to give members discounts or other good things. Follow us on the web and look for more information on what your card can bring you.

Don't forget that if you are a member you also get to post announcements on the calendar and in our

newsletter. Having a garage sale? Selling some furniture? Send us the information and we will post it.

Send your information to:

ppna.newsletter@gmail.com



Jeff Recommended



Seanachai Theatre's
current production,
That Was Then

Seanachai Theatre's current production,

That Was Then

by Anne Sunseri

Seanachai Theatre Company is proud to present the Midwest premiere of *That Was Then* by Gerard Stembridge, February 26th – April 3rd, 2011 in the 3rd Floor theatre at the Irish American Heritage Center, 4626 N Knox. Ensemble member Carolyn Klein directs fellow members Anne Sunseri and Sarah Wellington, with Ira Amyx, Molly Glynn and Joseph Wycoff rounding out the cast. Ensemble member Erin Diener is stage manager. Seanachai is doing a comedy!!! Being an Irish company, we tend to produce some very beautiful, yet emotionally heavy, pieces. That isn't to say that most dramas don't have humor sprinkled throughout them. Using humor to cope with pain is a very common distraction in Irish theatre. It is one of the reasons we love sharing these stories. Our last show, *The Weir*, was a great example of dark humor layered within these gripping human trials. Our current show, *That Was Then*, is somewhat of a departure from our recent shows at the IAHC, and we are excited to show our audience a completely different side of us! While the play deals

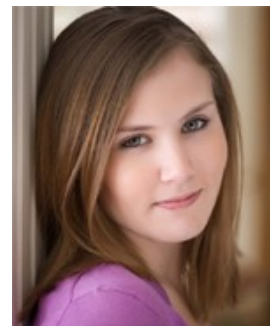
in the weighty issues of gender politics, the Celtic Tiger boom and bust, as well as deep-rooted Anglo-Irish prejudices, *That Was Then* is actually a riotous farce!

The cast is fantastic! We are lucky to have such a wonderful group of actors! This process has been a joy! Being the youngest member of the cast, I feel fortunate to be working with such well-established, talented actors. Molly Glynn, Joseph Wycoff, Ira Amyx, and Sarah Wellington are truly a joy to work with, and I am constantly awed by their talent and knack for comic timing. The show is set in two separate time periods simultaneously acted out onstage, so three of the biggest challenges we have faced are pace, timing, and not breaking into fits of laughter in the middle of a scene!

It's wonderful to have a cast that really supports each other and works to make the production better in any way it can. One of the most important aspects of being in an ensemble show is trust. It is great to walk into the theatre and know

that whatever choices you make in rehearsal that day - - whether they work or not - - will be supported by your fellow actors. We have all enjoyed this process immensely, and we are excited to share it with the audience.

A company member since 2005, Anne most recently appeared as Rose in *Dancing at Lughnasa*. She has also been seen as Maggie Lyttle in the Jeff-nominated production of *Scenes From the Big Picture*, and Niamh



in *War*. She understudied the role of Deirdre in the company's production of *Bold Girls*, for which she also served as Assistant Director.

<http://seanachai.org/>

***That Was Then* will be at the Irish-American Heritage Center from February 26 through April 3. Most performances are Thursdays, Fridays, and Saturdays at 7:30 p.m., and Sundays at 3:00 p.m. However, there will be no performance Saturday, March 12. A performance will be added on Wednesday, March 9 at 7:30 p.m**

For tickets call 866-811-4111 or buy tickets online from www.ovationtix.com

Portage Park Garden Club by, Jan Kupka



March is an important month for gardens and gardeners. Spring is weeks away and we're really ready for it.

Now is a perfect time to prune shrubs that flower in summer. It is not the time to prune spring-blooming shrubs such as azaleas, forsythias or lilacs; you could cut off their buds. You can prune overgrown, summer-blooming deciduous shrubs (plants that lose their leaves in winter). Use a sharp bypass pruner to make this gardening task easy

Some Chicagoans have already seen snowdrops up and flowering, and by the end of the month, the crocus should be in bloom. Soon there will be shoots of daffodils and tulips and perennials everywhere. So start venturing out on warmer days. You may be surprised at what you find. If a plant is starting to grow, uncover it enough so that the shoots can get light, but

keep the mulch around the plant. Spring can be treacherous in Chicago and the weather has given us some nasty surprises. Woody plants may start growing in March and then get zapped in April by frigid winds and snow. Remember that you may lose flowers for the year, but the plant itself will survive.

“Soon there will be shoots of daffodils and tulips and perennials everywhere.”

If you want to start seeds indoors, this is the time to start anything that says on the packet: "Start seeds 8 weeks before transplant date." The transplant date should be no earlier than May 15, the last frost date in zone 5. This includes many annuals plus tomatoes, eggplants, peppers.

Seeds for the perennials are

typically slow to germinate. Zinnias, for example, may germinate in less than a week, while some perennials may take up to a month to sprout. It's a good idea to label pots with not only the type of seed, but also the date of sowing and the average days to germination. In most cases, give seeds at least a month to germinate.

If you're starting seeds indoors, you will probably need to use grow lights and a timer. Most perennial seeds germinate best when exposed to light, so scatter a very thin layer of soil over the seeds or press them onto the surface to ensure good seed-to-soil contact. One of the keys to starting germinating seeds don't dry out; Unless otherwise indicated on the seed packet, seeds germinate best at warm room temperature (70-75 degrees F). After germination, place pots in cool room

temperature (around 65 degrees F) for best growth. If you're hoping for flowers the first year, you need to give the seedlings plenty of light so they're in top form when you set them out in the garden..

Two of the easiest flowers to start from seed are **Coreopsis** and **Shasta Daisies**. **Coreopsis** is an easy-to-grow plant that produces flowers starting in early summer. Plants grow in full sun and the flowers attract butterflies and birds. The plants tolerate dry soil once established. In the fall remove the seeds, store them in a cool place and re-sow in the spring. **Shasta daisies** boast large, pure-white flowers with yellow centers and are a perennial favorite. The plant forms a shrubby clump topped by flowers from early summer into autumn. They prefer full sun. They will reseed

(Continued on page 8)

Know your Numbers



PETE

Poly(ethylene terephthalate): Soda bottles, water bottles, vinegar bottles, medicine containers, backing for photography film.



HDPE

High-density Polyethylene: Containers for: laundry/dish detergent, fabric softeners, bleach, milk, shampoo, conditioner, motor oil. Newer bullet proof vests, various toys.



V

Poly(vinyl chloride): Pipes, shower curtains, meat wraps, cooking oil bottles, baby bottle nipples, shrink wrap, clear medical tubing, **vinyl dashboards** and seat covers, coffee containers.



LDPE

Low-density Polyethylene: Wrapping films, grocery bags, sandwich bags

(Continued on page #6)

Portage Park Palates by Jan and Jill

“We opted to go on a Tuesday night. I went on their website, and found they offer a three course prix fix “



We have a new restaurant in town. The Portage opened up last June at 3938 N. Central in Chicago. I wanted to get the word out about this hidden gem, but I'm a little late to the party. Seems they have developed quite a following since they opened. Good news travels fast. This new restaurant wanted to offer a finer experience in dining, and knew this area needed a restaurant that filled this niche.

Let me tell you a little about this restaurant. It's a quaint size.

Seats 30 in the dining room, and 15 in the bar, with a sophisticated look. Soft green walls that have a chair rail, white ceiling boards,

sconces and decorative mirrors adorn the room. There are banquet benches along the walls, with rich red velour. The tables are simple, and the plates are white, but have an architectural appeal.

Midway back is a large bar, and further back is a library room, and past that....Well, I'm getting ahead of myself. It is still winter, after all.

We opted to go on a Tuesday night. I went on their website, and found they offer a three course prix fix for \$25 on Tuesday, that seemed like a good deal, so off we went. We were greeted at the door by Neil, the general manager, who took our coats and showed us to a nearby table. In short order, our waitress, Gina, came over and took our order. We ordered a glass of Chardonnay/Viognier and our appetizers. We also ordered a bottle of the

mystery wine (red). In the past, we have found this to be something fun to do and the wines are always fun. It's only \$25 for the bottle, and we enjoyed the serendipity it brought to our visit. They have a well thought out wine list, almost all are in the \$25 to \$30 range, with a few bottles priced higher. These wines were carefully chosen by someone who is very knowledgeable, so it really takes the guess work out of picking a good wine. And many wines are priced by the glass. They also have a varied selection of beers, with a lot of microbrews by the bottle. It seems that specialty drinks are also popular, and the bartender was shaking up some martinis for the table next to us.

My partner opted for the prix fix dinner. To start he ordered the Garlic Cauliflower Soup with garlic chips. I had my eye on selections not on the specials list, and went for the Crab Cake (\$9.50). I loved every bite. My partner said the soup was very good, and he savored it. We had already ordered our entrée's, so we sat back with our no longer mystery bottle and relaxed. There was a nice slow pace for dinner, which is such a relief. I do not enjoy when some restaurants give you the next course when you still aren't finished with the previous course. I hate being rushed. There was a good crowd in the restaurant, although it wasn't full. People were enjoying themselves and there were sounds of conversation and laughter. The background music was contemporary. Gina was the only waitress when we dined on Tuesday, which is typical. The weekends are

busier, and reservations are recommended. One thing I noticed is that the bartender and the general manager pitched in and delivered food when it was ready. It was really a tag team effort, and they gave seamless service to everyone in the restaurant. After the short respite, our dinner order was served. For my entrée, I ordered the Hanger Steak with root vegetable pave, and a mushroom demi-glace (\$17.95). It was amazingly prepared and delicious. The pave is like a potato casserole, in layers beneath the steak. It rocked and went perfectly with our wine. My other half picked out pan roasted trout with parsnip puree and haricot verts and pancetta/onion froth. Sounds kind of foo foo, but he pronounced it fantastic and loved every bite. His prix fix came with dessert, he ordered banana cake with cream cheese frosting. It came out warm and it was really good. They do have a nice assortment of desserts, like apple pie and homemade ice creams. I was trying to keep my dinner near the specials price so I did not order a dessert and spent \$27.45. and I was very pleased with my choices. By the time we left the restaurant, most of the tables were taken. It can get a little crowded when the tables down the middle of the dining room are full.

If you haven't figured it out yet, we have been here a few times already. Last time, in the warm weather, we sat on the patio, which is really magical. The evening we went, we just got a bottle of the mystery wine and appetizers, that was all. So much fun. We had bacon wrapped dates and a

(Continued on page 7)

We invite members of the PPNA to join us as well as continuing to ask for suggestions naming your favorite restaurant in the area. In 2011 we hope you will continue to suggest restaurants and join us when we meet. If you would like to join us, our only requirement is that you do not notify the restaurant. We all pay for our own portion of the check, share the dishes and offer opinions for the review. An article about the restaurant will appear in the following PPNA newsletter. Send your emails to membership@portagepark.org.

Palates

(Continued from page 6)

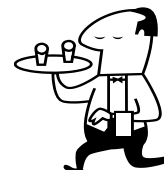
cheese plate, and enjoyed the late afternoon. The patio was being taken over for a birthday party later that day. It's a lovely spot, with a modern fountain against the building. And it's surrounded by a tall wood fence. I'm looking forward to it being open again. It feels like a secret garden.

The Portage has filled a need that was sorely lacking in our neighborhood, and it has been

embraced by the patrons looking for a dinner venue that reaches higher culinary heights. They also have sandwiches and a kids menu. The Kobe burger is supposed to be great, and I tried the pulled pork sandwich another time, and loved it. The Portage is open Tuesday thru Thursday from 5 to 9, Friday and Saturday from 5 to 10 and Sunday from 5 to 9 and closed on Monday. They also allow BYOB wine with a \$15 corkage. The Sunday brunch should be back in the warm weather.

Usually, I ask that you patronize a new place to keep it here. I think this place has found an appreciative audience-so check it out if you haven't made it there yet. There is free parking in the lot south of the restaurant after the dentist office closes. They are starting a communal dinner table on Thursday March 10th (this sounds like fun). You can sit with nine other persons at the table and have a four course tasting menu, family style, for \$30/person. Keep an eye on their website:

www.theportagechicago.com; and get on the email list. Call them at 773-853-0779 for reservations or email them at theportage@gmail.com. This place has a lot to love about it.



St Patrick High School

Stahl Family Theatre Upcoming Events



3/25/11 - 4/3/11—"Pippin"

Admission: \$10 adults; \$8 students

The St. Pat's Theatre Department presents "Pippin" March 25 through April 3 (Friday and Saturday performances at 7:30 p.m., Sundays at 2 p.m.). April 2 will feature a special dinner prior to the show (contact Patti Fabrizio, pfabrizio@stpatrick.org). The performance will feature actresses from Trinity, St. Ignatius, Resurrection and Ascension alongside the Shamrocks of St. Pat's.

The Stahl Family Theatre at Saint Patrick High School will host several events for the community throughout the upcoming weeks.

Saturday, 4/9/11, 7:30 p.m.—Sing-Along "Grease"

Admission: \$10

Rejoin Danny, Sandy, Rizzo and the whole cool gang at Rydell High in this audience sing-along celebration. Come in costume and compete for fun prizes! Popcorn and favors are included in the price of admission. Bring a group and experience the fun of singing these iconic tunes with Travolta and Newton-John. Relive the "Grease" that you all remember. Adults only.

For more information, call: Megan M Ivers, 773.282.8844 x286

http://www.stpatrick.org/performing_arts/events.aspx

Wednesday, 4/6/11, 7:30 p.m.—150th Anniversary Jazz Concert

Admission: \$10

Dave Matthews Band saxophonist and three-time Grammy winner Jeff Coffin and the Jeff Coffin Mutet will provide a special guest performance as the St. Pat's jazz bands celebrate the school's 150th Anniversary. This will be Coffin's second visit to the Shamrocks. Featured performances will be the Honors Jazz Band and Jazz Band. A piece commissioned for St. Pat's and composed by jazz artist Tom Matta will premiere at this event.

Sunday, 4/10/11, 2 p.m.—Lasallian Lounge Concert

Admission: \$20

Ars Viva Symphony Orchestra, Lake Forest Symphony, Chicago Philharmonic and the Ravinia Festival Orchestra are just a few local groups who benefit from the musicianship of harpist Kara Bershada and cellist Elizabeth Anderson. Bershada and Anderson will perform as part of St. Pat's Lasallian Lounge Concert Series. Complimentary wine, coffee, tea and snack are included in the price of the ticket.

Tickets for any event can be purchased online or by calling the box office at (773) 286-8470. Theatre is located at 5900 W. Belmont Ave. and is handicap accessible.

Beaubien Walk - a - Thon



"The Walk-a-thon planning committee is currently soliciting sponsorship donations from the business community to help underwrite the prizes and incentives..."

The Beaubien Elementary Parent Teacher Organization (PTO) will hold its 5th annual spring Walk-a-thon fundraiser on the school grounds during the week of May 2 – 6. The Walk-a-thon planning committee is currently soliciting sponsorship donations from the business community to help underwrite the prizes and incentives with which to reward our students' fundraising efforts.

Beaubien serves a multi-ethnic population of 1,170 students, grades pre-K through 8, from approximately 800 families. In addition to the

neighborhood program, the student population includes those attending the Regional Gifted Center as well as two Special Needs classes. The funds raised by the Walk-a-thon are used to the benefit of all our students in the form of field trips, activities and enrichment programs offered throughout the year, as well as through the purchase of copier supplies, art supplies, and teacher "wish-list" requests for their classrooms.

Please consider partnering with the PTO in support of our students with a donation toward this year's fundraiser. Monetary sponsorship levels range from a mere \$30.00 up to

\$500.00 and receive various forms of acknowledgment. However, we are grateful for any form of support - from in-kind item donations to food donations for the Walk-a-thon volunteers during the event, to coupons and other promotional items for the event swag bags. Every supporter is acknowledged in the Beaubien's monthly newsletter and contributions made to the Beaubien PTO are tax-deductible.

To learn more please contact the PTO's Walk-a-thon Coordinator, Bonnie Pfeiffelman, at 773-202-0176 or BeaubienWalkathon@yahoo.com.



Garden Club

(Continued from page 5)

themselves and return the following year.

If you want to move a rose bush, do it while the plant is dormant or just starting to break dormancy. Water well afterwards, and keep an eye on it. Don't let the roots dry out. Once new growth appears, you can

relax a bit, but keep watching.

The March 26th meeting for the Portage Park Garden Club will be held Saturday, March 26 at 9:30am in the 2nd floor conference room of the Austin-Irving Library. The guest speaker is Maureen Taylor President of the Old Irving Garden Club. She is also a garden designer with her own business, Taylor Made Landscape Design. She is going to

show some before and after pictures of her work and discuss issues such as drainage, and hand out a plant list of her favorites for sun/shade gardening. Refreshments will be served and guests are always welcome.

Once a perennial starts showing new growth, you can move it. In our zone (5) this is more likely to happen in late March or early April. This is the perfect time to move columbines and hosta.

With hosta, dig up the entire root ball and divide. If you can't get a spade into the middle of the ball, take a gardening knife and cut through the plant. The divisions may look unsightly but they will recover and soon make nice round plants. Do this in mid-summer and you've ruined the plant's good looks until the following year.



Shasta Daisies



The hot dog of plastics!



Recycle

(Continued from page #5)

Polypropylene: Tupperware®, syrup bottles, yogurt tubs, diapers, outdoor carpet.



Polystyrene: Coffee cups, disposable cutlery and cups (clear and colored), bakery shells, meat trays, "cheap" hub caps, packing peanuts, Styrofoam insulation.



The hotdog of plastics! Products labeled as "other" are made of any combination of 1-6 or another, less commonly used plastic.



Hungry - need \$\$ for ...

By GM Staniszewski

A few months back I got into a discussion with my wife about panhandlers. My wife is a very thoughtful and caring person and loves to help people, sometimes to a fault. That is how the discussion started. It turns out she had been striking up conversations and giving money to a woman that would panhandle every day in the neighborhood. Many of you probably know this woman. She is young with light hair and usually on the Wilson Avenue exit from the Edens. Now I can be less forgiving than my wife. Even though I believe in helping people, Over the years I have become callas to most panhandlers. When I was a student at Columbia, I would carry a few extra CTA Tokens in my pocket. Whenever I would come across a person at the subway entrance asking for money to get on the train (you know the story...) I would give them a token. Do you know how many times I got cursed at? Stared at? Or just

plain yelled at? Once someone actually threw the token back at me. Hey, it was only worth like seventy five cents back then. But, they wanted cash, not a token. Okay, I could go on like this. The point is, I am hardened by the street not to give.

"I understand empathy. I understand trying to help people. What I do not understand is throwing your money away."

I understand empathy. I understand trying to help people. What I do not understand is throwing your money away. Talk to someone who works with homeless people, this money does not help the panhandlers. The money empowers them to do exactly what got them on the street. Almost all of the time, this money is never being used for what you would like it to be used for, believe me. I am no Pollyanna. I have done my share of bad things. It's time to be realistic and start putting money to good use.

This brings me to the point of this piece. The community does have places to put your money. Many organizations are available. Whenever you meet that person you want to give a buck to, resist the urge. Then give the money to an

organization. Many of the churches you go to have ways of helping people and you know the money is being put to good use. How about every time you go to the store you pick up a can of food to give to a pantry? Will you even notice the extra cost?

Do not stop giving; just give it in the right place.

I recently had a conversation with the head of one of the organizations working in our area. They said that the misconception of everyone is that, if I give it to the person on the corner they will use it to help themselves. The thing is, they will help themselves to buy drugs and alcohol. Not for food or housing. They can get food and shelter. So what are they getting from you? The panhandlers are lying to you. The money you are giving the panhandlers will be put to better use by the organizations.

This city is full of places to get food and a bed. There is also talk of the need of a shelter in our community. All these organizations need your donations. Without donations they have very little to give. Think of all the budget cuts you keep hearing about. A dollar means a lot to any organization.

The PPNA will begin a section on the PPNA website for com-

munity groups that help people. Take some time, read what these organizations do for the community.

Here are some local groups to start. Maybe you don't have the money to give, well what about time? That's cheap.

Irving Park Food Pantry: Food Pantry
<http://www.irvingparkfoodpantry.com/>

Hands to Help: Dedicated to helping the homeless
<http://handstohelpministries.org/>

Our Lady of Victory: Food Pantry
<http://www.olvchicago.org/>

Lydia Homes: Helps children and families with children
<http://www.lydiahome.org/>

Take that dollar you were going to give the panhandler, buy food for a pantry or donate it to an organization.

All of the organizations I have listed are working in our community now. I know there are more. If you know of one not listed send me an email with the information and I will make sure it gets on our site.

Email;
 ppna_newsletter@gmail.com



HAVE YOU NOTICED ??

By Philip Schwartz, Portage Park Resident

“Have You Noticed” contains opinions that may not be the opinion of the PPNA Board, or it’s Members.

Your Vote, Your Ward, Your Opportunity

Your Vote at the Ward level is more powerful than any where else in city politics right now. It seemed like the Mayoral election was almost predetermined before anyone cast a ballot. That doesn’t mean your vote can’t affect change.

Consider the following...

I won’t chastise you for not voting and the only thing I am endorsing is change through participation in the electoral process.

Chicago is getting a new mayor and his name will be Rahm Emanuel.

According to the Chicago Board of Elections, the voter turnout finished at 42.20% which means that while 593,353 voted for change...812,864 were content to let change happen.

In my opinion, the opportunity for change that everyone speaks of,

was not at the mayoral level or at the very least not exclusive to the choice of a new mayor. The reason so many Alderman were stepping aside or retiring was a reflection of a new mayor for the first time in 22 years. As much as this is an earmark moment in the history for Chicago, 40% of the city council is also going to change in just one month and I believe there will be another mass exodus of the old guard 4 years from now. Can you imagine? Maybe by the conclusion of the elections 4 years from now that less than 20% of the Alderman can say they have served for more than 5 years. This is where change happens. This is why your vote counts. This is why should get involved.

Forget your party affiliation and your candidate preference. Focus solely on the fact that the Mayor will have to rely on our two new Alderman among the 19 incoming Alderman for help to pass legislation. That means our Alderman can affect change. There won’t be a Richard Daley making decisions. Alderman won’t be automatically falling in line. Who we elect to be our representatives will affect the decisions made in city hall.

You can be a part of that change. With an even lower voter turnout than the mayoral election expected your vote could very well be the vote that determines the winner or loser. At the very least for the first time in recent history your vote has never meant so much or carried some much weight.

I know my neighbors care. How else can you explain that in the 38th Ward we had 12,241 people vote or 44% of the registered voters and in the 45th Ward it was 50% or 15,887. This means our neighborhood voted in higher percentages than the city as a whole.

Change isn’t coming, it’s here! Be a part of change. Go to the polls on April 5th. Cast your vote. Speak your mind. Shape the future of our city.

Have you noticed anything that needs more noticing? Do you have an opinion? Send it to us, we will print it! Send it to us at:
ppna.newsletter@gmail.com



The Portage Park Neighborhood Association News is a publication of the PPNA
PPNA Board Members are:

- | | |
|------------------------------------|------------------------------|
| Gerard Staniszewski—PPNA President | Philip Schwartz—Secretary |
| Bob Brobson—Director | Jill Staniszewski—Membership |
| Chris Ericksen—Treasurer | Maria Pollock—Director |
| Scott Larson—Director | Nick Voss—Director |

For more information on the PPNA and / or the PPNA News, contact us online at www.portagepark.org.

The PPNA is a 501c4 Social Welfare Organization
©2011 Portage Park Neighborhood Organization

**B e c o m e
A
M e m b e r
T o d a y**
www.portagepark.squarespace.com/membership/

PPNA Mission Statement

The Portage Park Neighborhood Association (PPNA) is a 501 (c)4 non-profit community organization comprised of local residents and business owners. Our mission is to promote the welfare and spirit of the Portage Park community.

We seek to fulfill this mission through five primary purposes:

1. Work with public officials, private citizens and block clubs to eliminate unwholesome and blighted features; ensure the quality and availability of public and private community services; and maintain the safety and mobility of the people who live and work in Portage Park;
2. Promote Portage Park as a place to conduct business and facilitate the development of a vital and prosperous business community;
3. Collect and distribute information about topics of interest to the community and provide a forum for residents, block clubs, and business owners to express their opinions;
4. Gain consensus on such topics and speak as a uniform voice for the community;
5. Promote a spirit of cooperation, goodwill and neighborliness, and encourage people to openly communicate and participate in the exchange of ideas about how to improve the community and preserve those features that make this community unique.